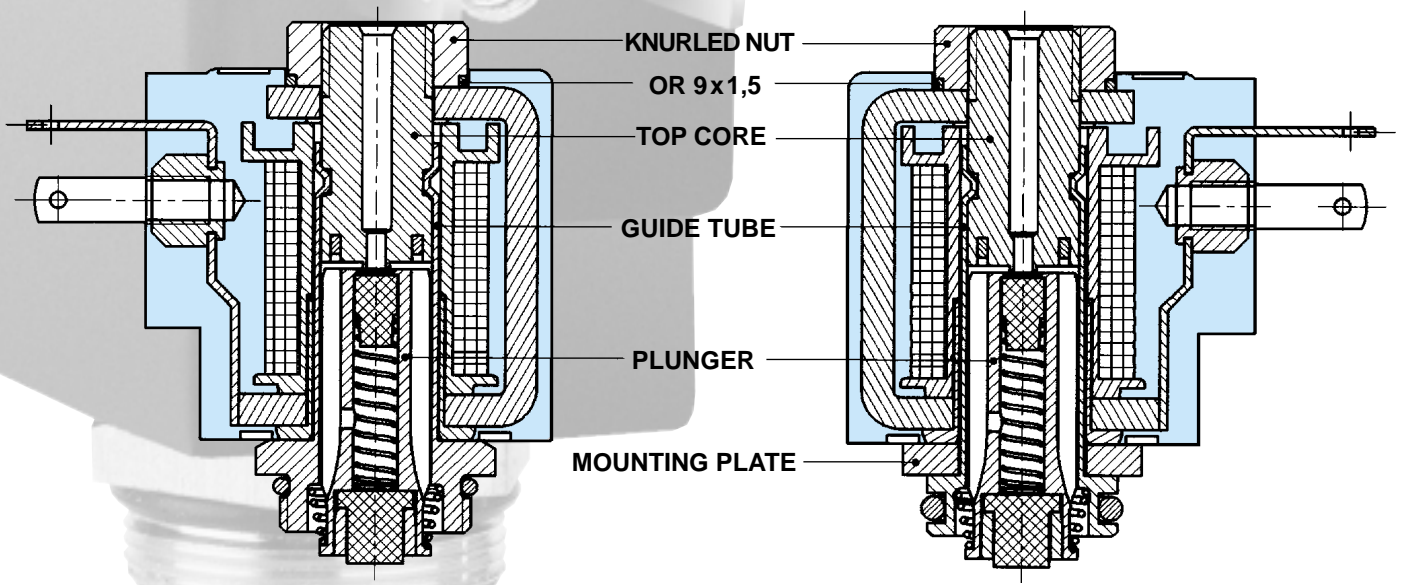


The EVI9 S system by AMISCO includes a wide range of solenoid operators designed for pneumatic valves. All solenoids of this system have the guide tube with a diameter of 8 mm and the plunger with a diameter of 7 mm. The system is designed for use with air.

*Please contact Amisco for use with other media.  
All given informations are subjected to changes without notice.*



**THREAD VERSION**

**FLANGE MOUNTING VERSION**

## COIL

The coil is available with different electrical terminations. Types, power and other characteristics are described in the following pages.

All coils feature:

- heat resistant bobbin moulded with 30% glass filled thermoplastic polyester material
- class H wire 200°C according to IEC 317-8
- built-in magnetic yoke made by low carbon iron
- flux ring for increased performances
- encapsulation with high quality specially designed glass filled nylon.

The use of other materials is possible upon special agreements. All coils are rated to class F and to IP 65 (with connector). The coil is designed and constructed in accordance to EN 60204.1 and VDE 0580 and it is suitable for industrial ambient conditions. For use in different ambients with high humidity, please, take contact with Amisco.

## ARMATURE ASSY

Plunger and core are made by a magnetic stainless steel specially designed for solenoid applications.

The guide tube is made with brass (stainless steel is possible upon special agreement). The plunger is normally equipped with NBR rubber seals. Other materials like Viton are available upon request. The armature assembly is designed for more than 10<sup>6</sup> cycles.

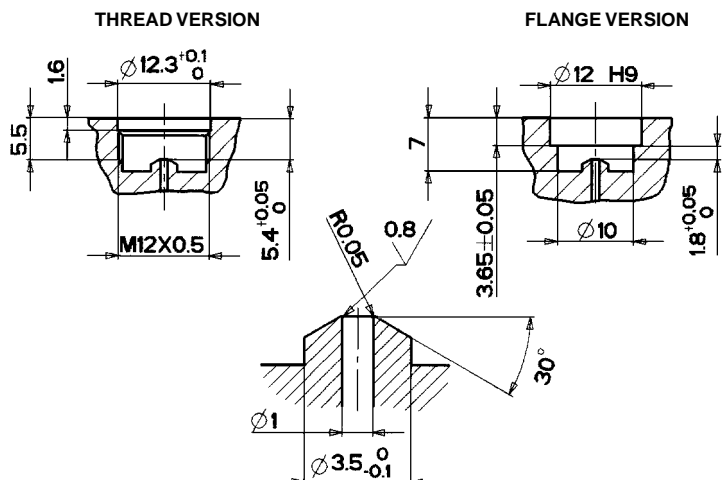
## COMPLETE OPERATOR

The coil is fastened to the plungerguide tube by means of a knurled nut for ease of change over without interrupting the pneumatic circuit.

The armature assy is fixed to the valve body either by means of a M12x0.5 thread (thread version) or by a mounting plate with screws (flange mounting version). Amisco doesn't supply the plate.

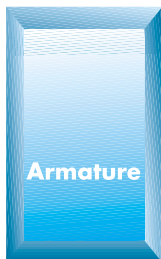
The suggested interface dimensions of the valve body are shown below.

Any change to the prescribed dimensions can effect the performances of the solenoid operator.



## SOLENOID SYSTEMS

for 2/2 and 3/2 way normally closed and normally open valves



Electrical termination	Code	Characteristics					
			DC	AC 50 Hz	AC 60 Hz		
Terminals AMP 2.8x0.5 width 9.4 mm Terminals DIN 43650 C Flying leads	0908S...	Rated power DC	W	1.5	2.5		
	0908D...	Inrush power AC	VA			4.8	4
	0908C...	Rated power AC	VA			3.6	3
		Coil temperature rise	°C	34	57	62	52
		Copper temperature rise	°C	36	60	70	60
3/2 way NC Flange 3/2 way NC Thread	07L.....	Inlet orifice Ø	mm	0.8	1	1	1
	07F.....	Exhaust orifice Ø	mm	1	1.2	1.2	1.2
		Working pressure	bar	0-8	0-10	0-10	0-10
2/2 way NC Flange 2/2 way NC Thread	07L.....	Inlet orifice Ø	mm	0.8	1	1	1
	07F.....	Working pressure	bar	0-8	0-10	0-10	0-10
3/2 way NO Flange 3/2 way NO Thread	07L.....	Inlet orifice Ø	mm	1	1.2	1.2	1.2
	07F.....	Working pressure	bar	0-8	0-10	0-10	0-10

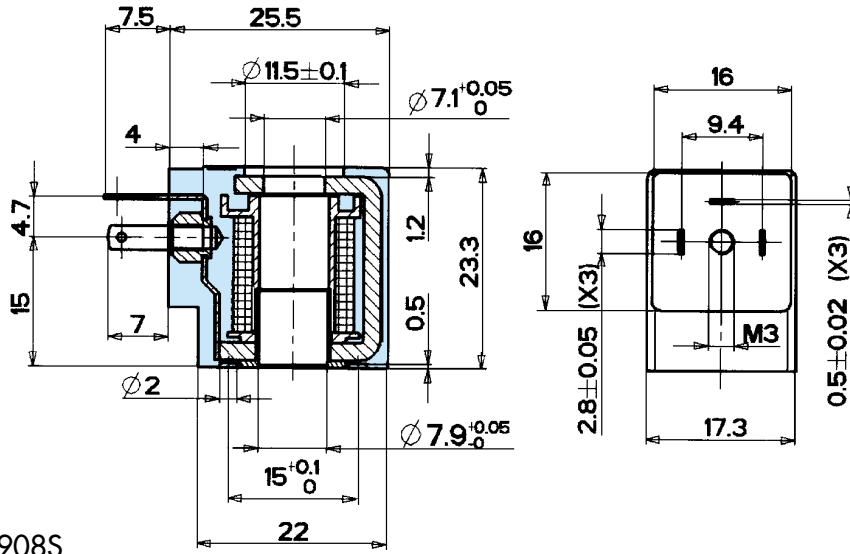
Notes:

Voltage tolerance: ± 10%  
 Temperature range: -20°C ÷ +50°C  
 Duty cycle: 100%

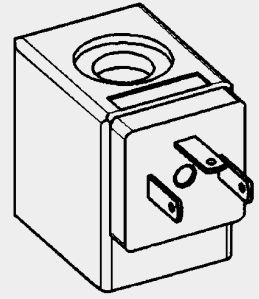
Standard voltages: 24 - 110 - 230 VAC  
 12 - 24 VDC  
 Other voltages on request

For different orifice sizes and pressures contact AMISCO

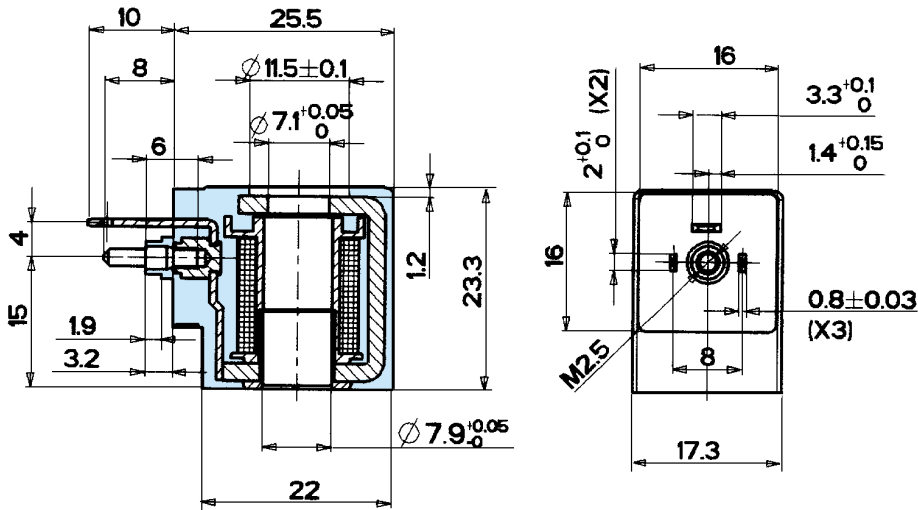
## EVI 9



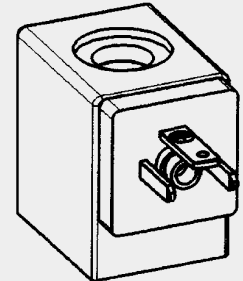
CODE 0908S.....



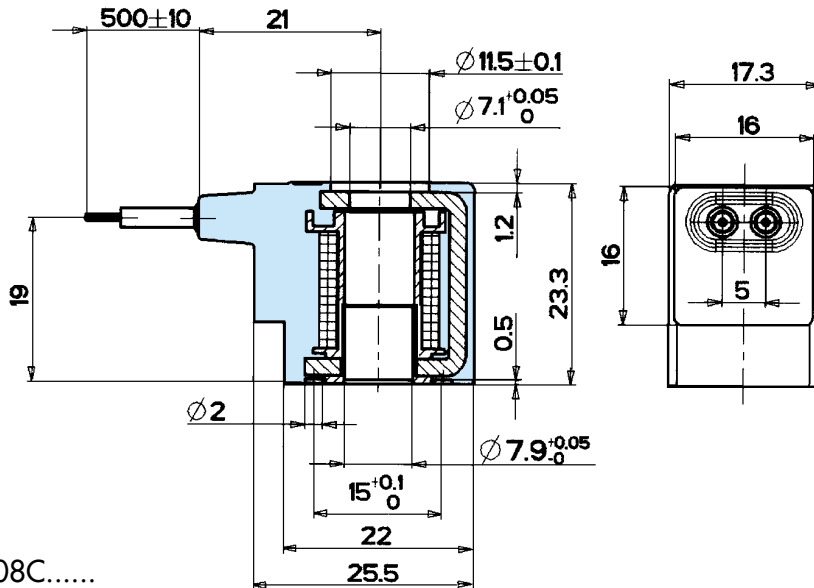
## EVI 9 DIN



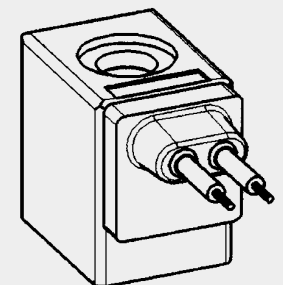
CODE 0908D.....



## EVI 9 FLYING LEADS



CODE 0908C.....



## COIL CODING SPECIFICATION



### TYPE

09= EVI 9

### COIL BORING

08 = 8 mm

### ELECTRICAL CONNECTION

S = AMP 2,8x0,5  
D = DIN 43650 C  
C = Flying leads

### SUPPLY CURRENT

A = Alternating current (A.C.)  
D = Direct current (D.C.)  
R = Rectified alternating current

### NOMINAL VOLTAGE

Example: 024 = 24V  
220 = 220 V

### WINDING CODE

To be communicated by AMISCO

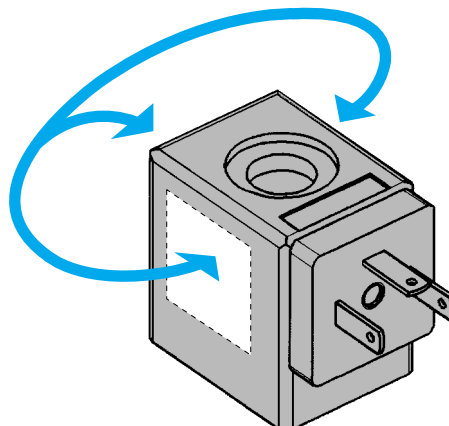
### SPECIAL FEATURES

Z = Standard  
M = Different moulding material  
C = Different colour

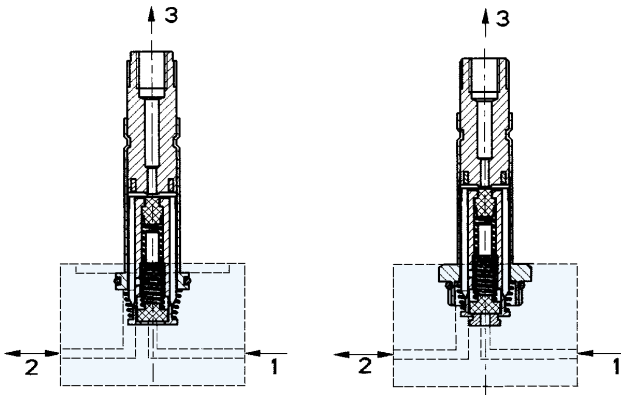
### MARKING

N = Standard  
T = Customer specifications  
B = No Marking

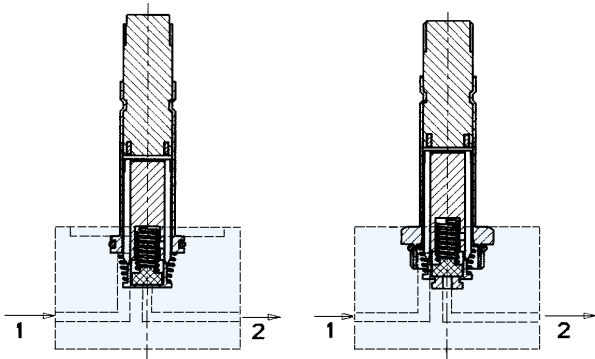
Alternative possibilities  
for CUSTOMER LOGO



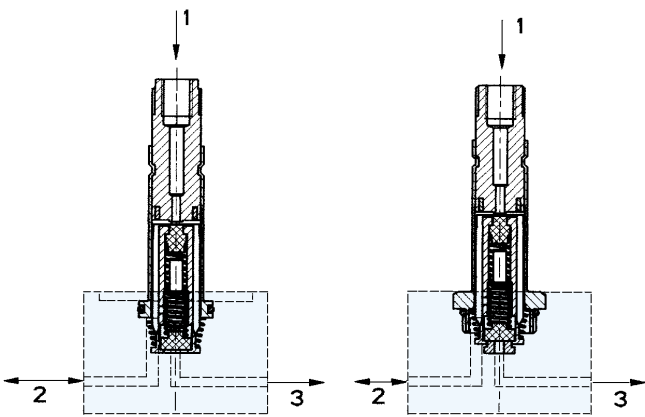
# EXAMPLES OF MAIN APPLICATIONS



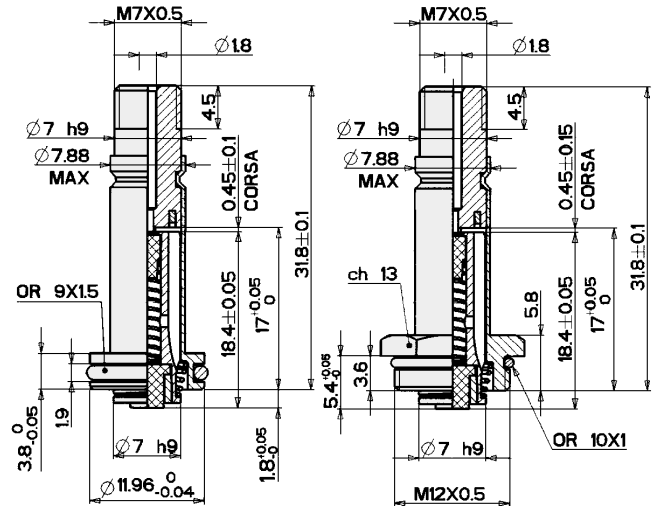
3/2 NC



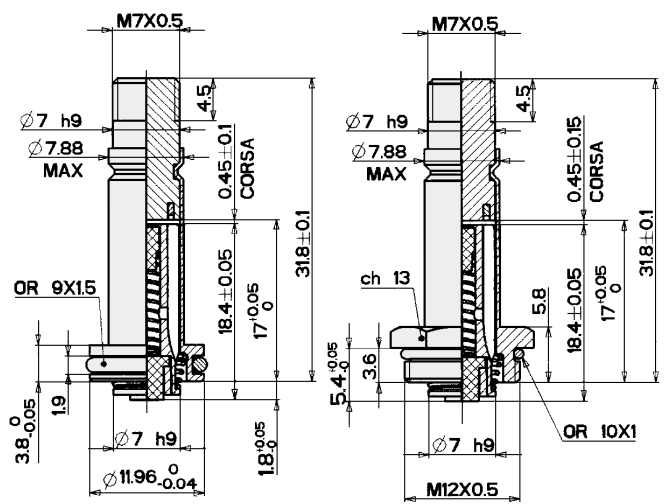
2/2 NC



3/2 NO



3/2 OPERATOR



2/2 OPERATOR

# OPERATOR CODING SPECIFICATIONS



## TYPE

07L= Flange  
07F= Thread

## DRAWING NUMBER

05480 = SP 548/0  
06260 = SP 626/0

## SUPPLY CURRENT

A = Alternating current  
D = Direct current

## FUNCTION

2 = 2/2 way  
3 = 3/2 way

## FUNCTION

C = Normally closed  
O = Normally open

## SEALS

B = Low temperature NBR  
E = EPDM - V = Viton  
N = NBR - C = Neoprene

## FASTENING SYSTEM

N= Without fastening system. Fastening nuts to be ordered separately as below:

## FASTENING NUTS (Note: tightening torque max 0.6 Nm)

Aluminium knurled nut	Cod. 540222	
O-Ring	Cod. 500355	